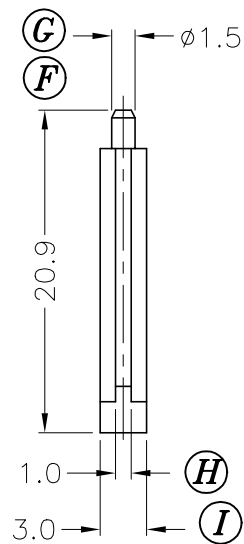
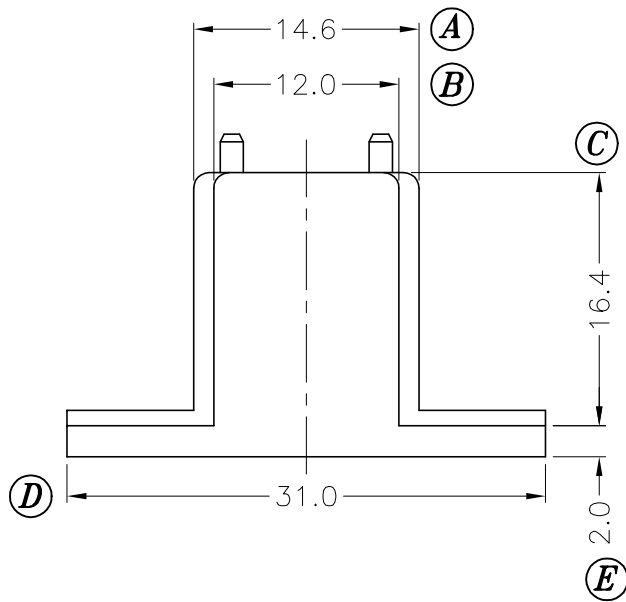


PART C-015



REV.	REVISIONS	REC.	REV.	REVISIONS	REC.

DRAWN & DRAFTED BY YAN WEI MING	TOLERANCES		ANGLE:	TITLE:	
	0 $L \le 4$ ± 0.1	pin pitch	$\pm 1^\circ$	SEPARATOR T-31X19X13	
CHECKED & APPROVED BY ZHONG YU	4 $L \le 16$ ± 0.2		UNIT:	BOBBIN MATERIAL:	UL REC.
	16 $L \le 63$ ± 0.3	MM	PBT 1403G6	UL 94V-0	
ORIGIN: DG			PIN MATERIAL:	PIN TENSION LOAD:	
PIN SHINE INDUSTRIAL CO., LTD. TEL: 886-2-22990545 FAX: 886-2-22990546			DATE:	DRAWING NO.	
			APR. 22 '1999	C-015-1	
			REV.	0	