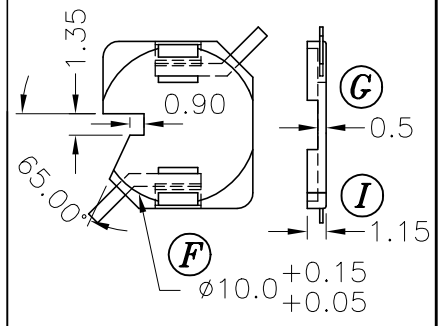
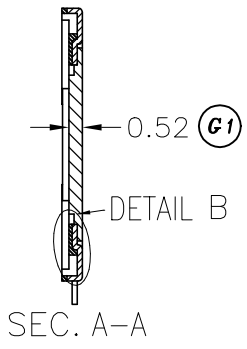
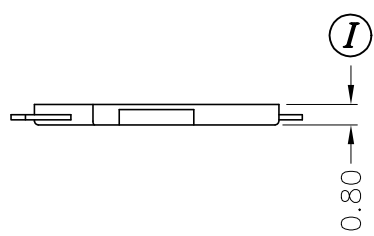
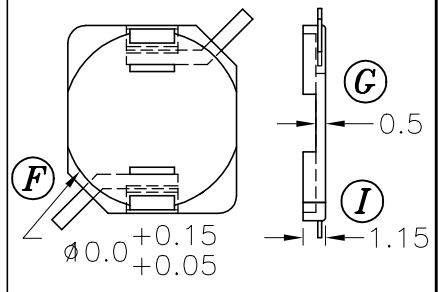


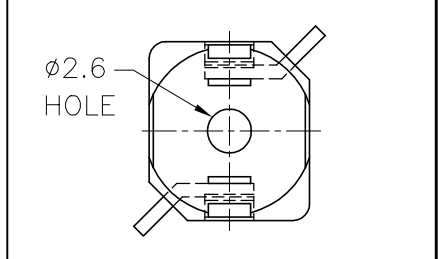
DRAWING NO.	MATERIAL:	ORIGIN:
SB-011-5	LCP E4008	DG



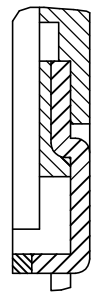
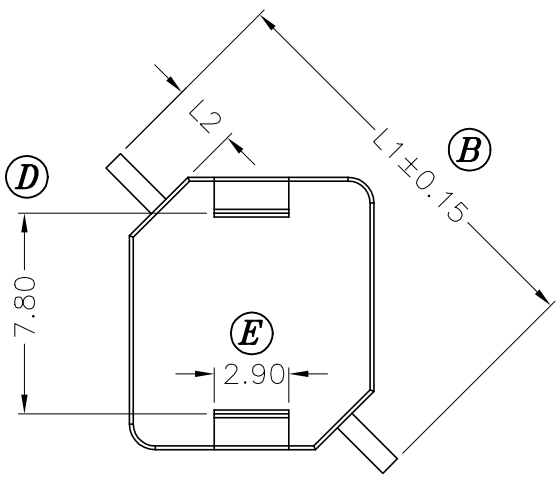
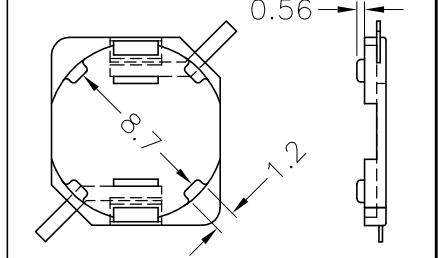
DRAWING NO.	MATERIAL:	ORIGIN:
SB-011-4	LCP E4008	DG



DRAWING NO.	MATERIAL:	ORIGIN:
SB-011-3	LCP E4008	DG



DRAWING NO.	MATERIAL:	ORIGIN:
SB-011-2	LCP E4008	DG



DETAIL B

(P/N)	(SPEC.)	
SB-011 (A)	L1 =16.0	L2 =2.5
SB-011 (B)	L1 =13.0	L2 =1.0

REV.	REVISIONS	REC.	REV.	REVISIONS	REC.
1	ADD DIM.(G1) 0.52, ADD P/N NO.				

DRAWN & DRAFTED BY JOHN RONG	TOLERANCES		ANGLE:	TITLE:	
	0<L≤4 ±0.1	COPLANARITY	±1°	SMD BASE 10.6X9.5X0.52	
CHECKED & APPROVED BY LONG HONG JUN	4<L≤16 ±0.2	0.1MAX	UNIT:	BOBBIN MATERIAL:	UL REC.
	16<L≤63 ±0.3		MM	LCP E4008	UL 94V-0
PIN SHINE INDUSTRIAL CO., LTD. TEL:886-2-22990545 FAX:886-2-22990546			ORIGIN:	PIN MATERIAL:	PIN TENSION LOAD:
			DG	PHOSPHOR BRONZE	1.5KG MIN
			DATE:	DRAWING NO.	REV.
			MAR.30 '2002	SB-011	1