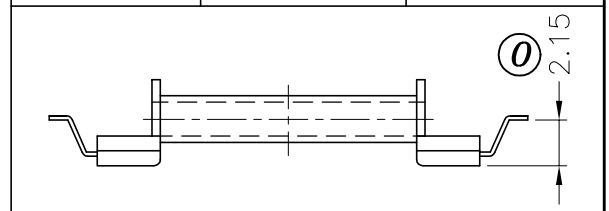
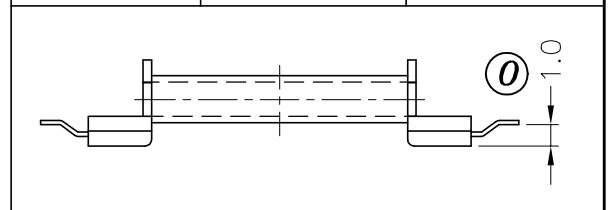


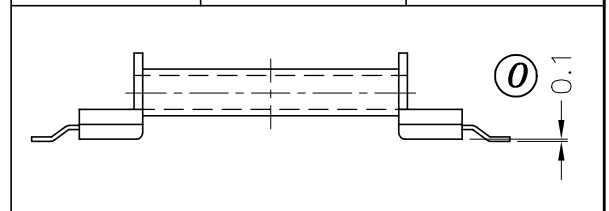
DRAWING NO.	MATERIAL:	ORIGIN:
S-1601-3	LCP E4008	DG



DRAWING NO.	MATERIAL:	ORIGIN:
S-1601-2	LCP E4008	DG



DRAWING NO.	MATERIAL:	ORIGIN:
S-1601-1	LCP E4008	DG



REV.	REVISIONS	REC.	REV.	REVISIONS	REC.
1	△ △	: REVISED SPECIFICATION			
	(F) 1.55	->1.6 (H) 2.15	->2.2 (H1) 5.9	->5.78	
2	(F) 1.6	->1.55 (H) 2.2	->2.15 (H1) 5.78	->5.9	

DRAWN & DRAFTED BY TSUNG TUAN	TOLERANCES		ANGLE: ±1°	TITLE: SMD BOBBIN EE-16	
	0<L≤4 ±0.1	COPLANARITY 0.1 MAX	UNIT: MM	BOBBIN MATERIAL: LCP E4008	UL REC. UL 94V-0
CHECKED & APPROVED BY CHIN TE	4<L≤16 ±0.2		ORIGIN: DG	PIN MATERIAL: PHOSPHOR BRONZE	PIN TENSION LOAD: 1.5KG MIN.
PIN SHINE INDUSTRIAL CO., LTD. TEL:886-2-22990545 FAX:886-2-22990546			DATE: JUL.17 '2003	DRAWING NO. S-1601	REV. 2