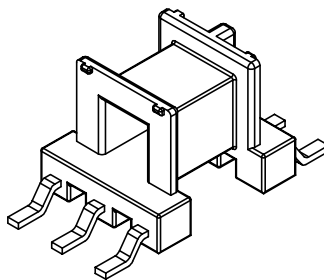
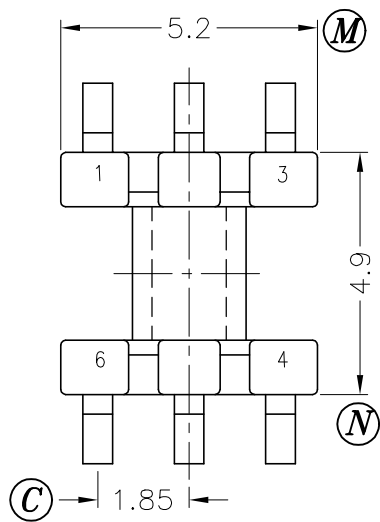
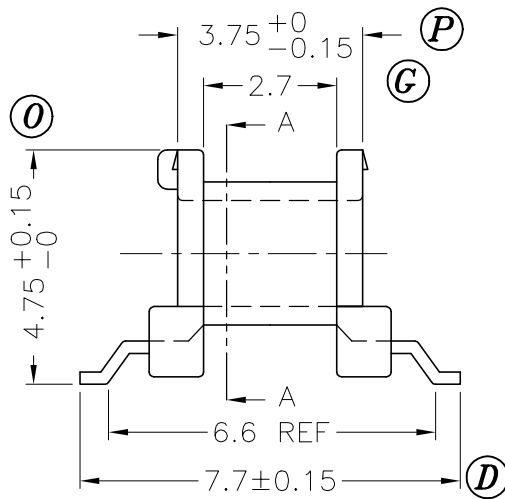
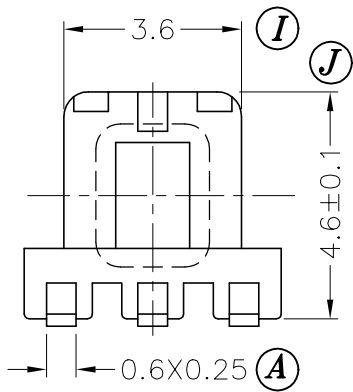
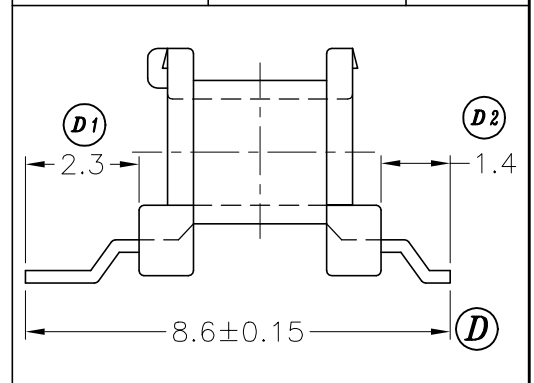


SEC. A-A



DRAWING NO:	MATERIAL:	ORIGIN:
S-502-1	LCP E4008	DG SZ



B-005.101L(B-005)

REV.	REVISIONS	REC.	REV.	REVISIONS	REC.
1	THE DIMENSION POSITION MARKED:(O)				
2	CANCEL (L),(B1); PIN TENSION LOAD 1.5KG --> 0.9KG;				
	UPDATE DRAWING.				

DRAWN & DRAFTED BY HARRY.LIU	TOLERANCES		ANGLE:	TITLE:	
	0<L≤4 ±0.1	COPLANARITY 0.1 MAX	±1°	SMD BOBBIN EE-5.0	
CHECKED & APPROVED BY JOHN RONG	4<L≤16 ±0.2		UNIT:	BOBBIN MATERIAL:	UL REC.
	16<L≤63 ±0.3	MM	LCP E4008	UL 94V-0	
PIN SHINE INDUSTRIAL CO.,LTD. TEL:886-2-22990545 FAX:886-2-22990546		ORIGIN:	PIN MATERIAL:	PIN TENSION LOAD:	
		DG SZ	PHOSPHOR BRONZE	0.9KG MIN	
		DATE:	DRAWING NO.	REV.	
		APR.02 '2003	S-502	2	