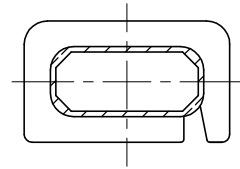


SEC. 1,3,5,7

DRAWING NO:	MATERIAL:	ORIGIN:
S-2002-1	LCP E4008	SZ



SEC. 1, 2,3,4,5,6

REV.	REVISIONS	REC.	REV.	REVISIONS	REC.
1	(N):12.7 CHANGE TO 13.2, (Q):7.8 CHANGE TO 7.9, (Q1): 7.7CHANGE TO 7.8, (U):2.0 CHANGE TO 2.05, THE SLIP CHANGE TO ACROSS NOTE ∇ ; COUNTERMARK "PS".		2	CANCEL (U); UPDATE DRAWING	

DRAWN & DRAFTED BY ZHANG CHAO	TOLERANCES		ANGLE:	TITLE:	
	0<L≤4 ±0.1	COPLANARITY 0.1 MAX	±1°	SMD BOBBIN EFD-20 (8 SEC)	
CHECKED & APPROVED BY TIAN BAI SEN	4<L≤16 ±0.2		UNIT:	BOBBIN MATERIAL:	UL REC.
	16<L≤63 ±0.3	MM	LCP E4008	UL 94V-0	
PIN SHINE INDUSTRIAL CO.,LTD. TEL:886-2-22990545 FAX:886-2-22990546		ORIGIN:	PIN MATERIAL:	PIN TENSION LOAD:	
		SZ	PHOSPHOR BRONZE	3.0KG MIN	
			DATE:	DRAWING NO.	REV.
			AUG.19 '2002	S-2002	2