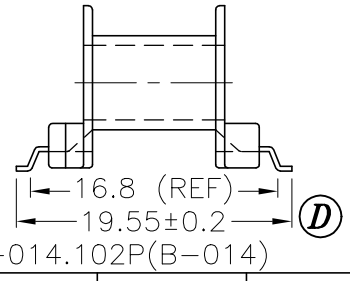
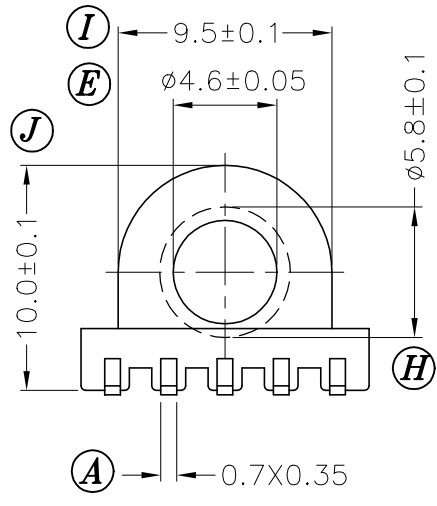
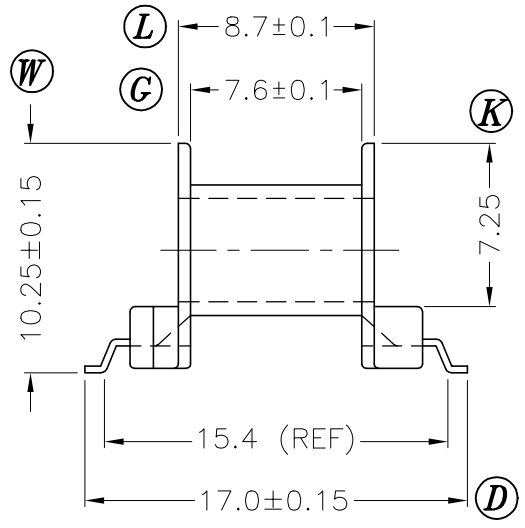
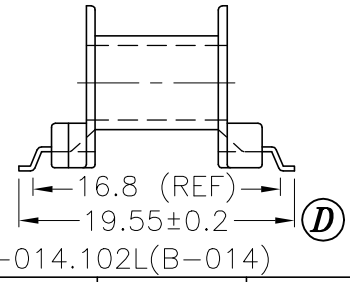


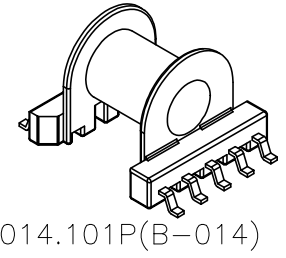
DRAWING NO.	MATERIAL:	ORIGIN:
S-1306-5	PM9630	DG SZ



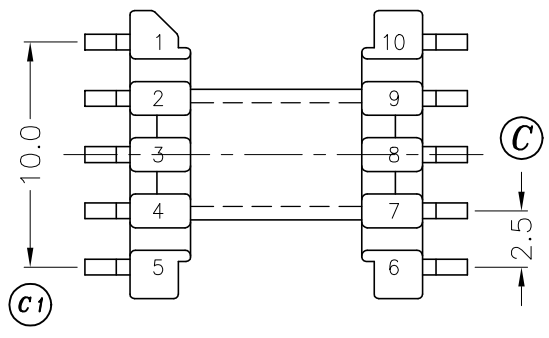
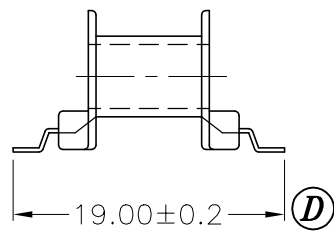
DRAWING NO.	MATERIAL:	ORIGIN:
S-1306-4	LCP E4008	DG SZ



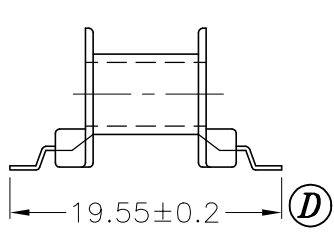
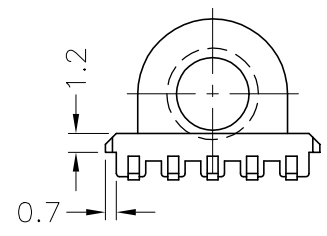
DRAWING NO.	MATERIAL:	ORIGIN:
S-1306-3	PM9630	SZ DG



DRAWING NO.	MATERIAL:	ORIGIN:
S-1306-2	LCP E4008	DG SZ



DRAWING NO.	MATERIAL:	ORIGIN:	DRAWING NO.	MATERIAL:	ORIGIN:
S-1306-6	PM9630	SZ	S-1306-1	LCP E4008	DG SZ



B-014.101L(B-014)

REV.	REVISIONS	REC.	REV.	REVISIONS	REC.

DRAWN & DRAFTED BY	WANG CHENG	TOLERANCES		ANGLE:	TITLE:	
	CHECKED & APPROVED BY	JOHN RONG	0<L≤4 ±0.1	±1°	SMD BOBBIN EP-13	
			4<L≤16 ±0.2	UNIT:	BOBBIN MATERIAL:	UL REC.
			16<L≤63 ±0.3	MM	LCP E4008	UL 94V-0
			COPLANARITY 0.1 MAX	ORIGIN:	PIN MATERIAL:	PIN TENSION LOAD:
				DG SZ	PHOSPHOR BRONZE	1.0KG MIN
		TEL:886-2-22990545      FAX:886-2-22990546			DATE:	DRAWING NO.
					JAN.30 '2002	S-1306
						REV. 0