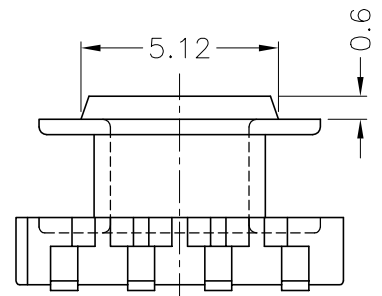
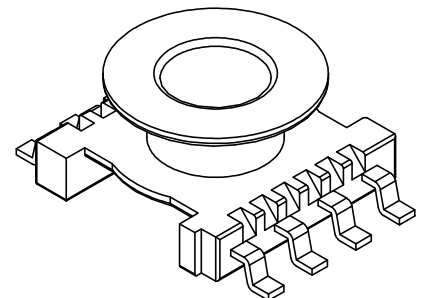


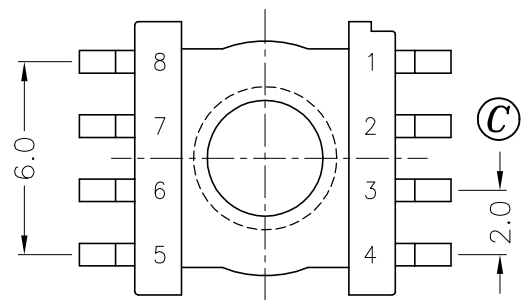
DRAWING NO.	MATERIAL:	ORIGIN:
S-900-2	LCP E4008	SZ



DRAWING NO.	MATERIAL:	ORIGIN:
S-900-1	PM9630	DG SZ



B-008.101P



B-008.101L

REV.	REVISIONS	REC.	REV.	REVISIONS	REC.
1	ADD (P); UPDATE DRAWING				

DRAWN & DRAFTED BY WANG CHENG	TOLERANCES		ANGLE:	TITLE:	
	0<L≤4 ±0.1		±1°	SMD BOBBIN ER-9.5/5	
CHECKED & APPROVED BY JOHN RONG	4<L≤16 ±0.2	COPLANARITY	UNIT:	BOBBIN MATERIAL:	UL REC.
	16<L≤63 ±0.3	0.1 MAX	MM	LCP E4008	UL 94V-0
PIN SHINE INDUSTRIAL CO., LTD. TEL:886-2-22990545 FAX:886-2-22990546			ORIGIN:	PIN MATERIAL:	PIN TENSION LOAD:
			DG SZ	PHOSPHOR BRONZE	1.0KG MIN.
			DATE:	DRAWING NO.	REV.
			APR.02 '2003	S-900	1