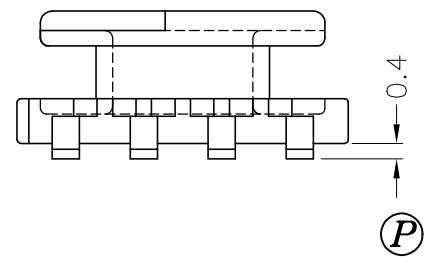


DRAWING NO.	MATERIAL:	ORIGIN:
S-905-1	LCP E4008	SZ



REV.	REVISIONS	REC.	REV.	REVISIONS	REC.
1	ADD TWO OF GIBBOSITY Δ				
2	CANCEL (Q),(O); UPDATE DRAWING				

DRAWN & DRAFTED BY LIU YOU SEN	TOLERANCES		ANGLE:	TITLE:	
	$0 < L \leq 4 \pm 0.1$	$4 < L \leq 16 \pm 0.2$	$\pm 1^\circ$	SMD BOBBIN ER-9.5/5	
CHECKED & APPROVED BY TIAN BAI SEN	$16 < L \leq 63 \pm 0.3$	COPLANARITY 0.1 MAX	UNIT:	BOBBIN MATERIAL:	UL REC.
			MM	LCP E4008	UL 94V-0
PIN SHINE INDUSTRIAL CO., LTD. TEL:886-2-22990545 FAX:886-2-22990546			ORIGIN:	PIN MATERIAL:	PIN TENSION LOAD:
			SZ	PHOSPHOR BRONZE	1.0KG MIN
			DATE:	DRAWING NO.	REV.
			APR.02 '2003	S-905	2