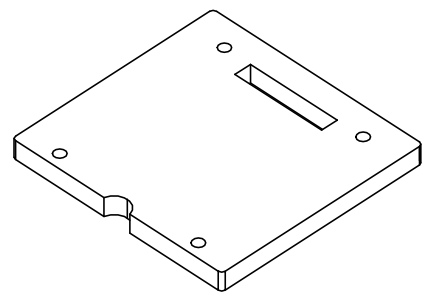
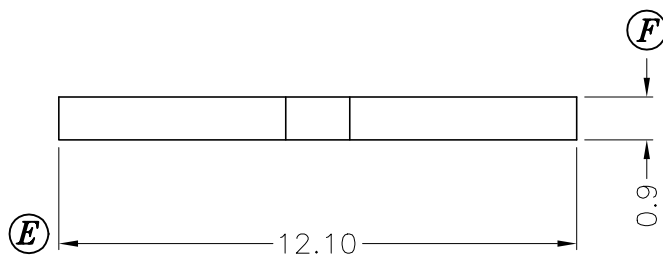


SEC. A-A



REV.	REVISIONS	REC.	REV.	REVISIONS	REC.

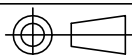
DRAWN & DRAFTED BY JOHN RONG	TOLERANCES		ANGLE: $\pm 1^\circ$	TITLE: BASE 11.6X11.6X0.9	
	0 <math>L \le 4</math> $\pm 0.1$	pin pitch	UNIT: MM	BOBBIN MATERIAL: PBT 4115	UL REC. UL 94V-0
CHECKED & APPROVED BY WANG	4 <math>L \le 16</math> $\pm 0.2$		ORIGIN: DG	PIN MATERIAL:	PIN TENSION LOAD:
	16 <math>L \le 63</math> $\pm 0.3$		DATE: AUG.13 '2001	DRAWING NO. PB-023A	REV. 0



PIN SHINE INDUSTRIAL CO., LTD.

TEL: 886-2-22990545

FAX: 886-2-22990546



DATE: AUG.13 '2001

DRAWING NO.

PB-023A

REV.

0