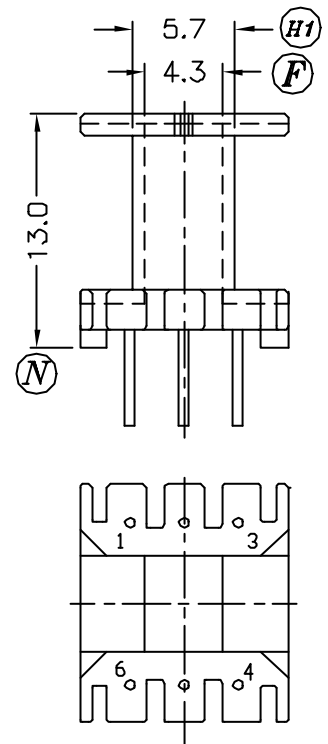


DRAWING NO.	MATERIAL:	ORIGIN:
P-1606-1	PHENOLIC T355J	TH



REV.	REVISIONS REC.	REV.	REVISIONS REC.
1	(E):5.2->5.3 (K):11.5->11.4 (M):13.2->13.3 (L):13.2->13.3		
2	CANCEL (O); UPDATE DRAWING		

DRAWN & DRAFTED BY WNCH HSIANG	TOLERANCES		ANGLE: $\pm 1^\circ$	TITLE: T-H BOBBIN EE-16	
	0<L≤4 ±0.1	pin pitch ±0.2	UNIT: MM	BOBBIN MATERIAL: PHENOLIC T375J	UL REC. UL 94V-0
CHECKED & APPROVED BY CHIN TE	4<L≤16 ±0.2		ORIGIN: DG	PIN MATERIAL: CP WIRE	PIN TENSION LOAD: 1.2KG MIN
	16<L≤63 ±0.3		DATE: MAR.31 '2003	DRAWING NO. P-1606	REV. 2



PIN SHINE INDUSTRIAL CO.,LTD.

TEL:886-2-22990545

FAX:886-2-22990546

