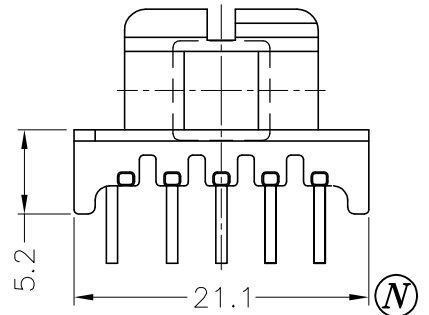
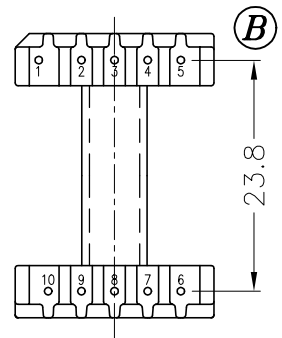


DRAWING NO:	MATERIAL:	ORIGIN:
P-1912-2	PHENOLIC T375J	DG



DRAWING NO:	MATERIAL:	ORIGIN:
P-1912-1	PHENOLIC T375J	DG



REV.	REVISIONS	REC.	REV.	REVISIONS	REC.
1	(C1):3.5→4.5		4	CANCEL(L),(P); UPDATE DRAWING	
2	(B):24.3→24.1				
3	CORRECT THE DRAWING FOR THE LOCATION OF DIMENSION:(C1).				

DRAWN & DRAFTED BY WNCH HSIANG	TOLERANCES		ANGLE:	TITLE:	
	0<L≤4 ±0.1	pin pitch ±0.2	±1°	T-H BOBBIN EEL-19	
CHECKED & APPROVED BY JOHN RONG	4<L≤16 ±0.2		UNIT:	BOBBIN MATERIAL:	UL REC.
	16<L≤63 ±0.3	MM	PHENOLIC T375J	UL 94V-0	
ORIGIN:		DG	PIN MATERIAL:	PIN TENSION LOAD:	
			CP WIRE	1.5KG MIN.	
DATE:		APR.01 '2003	DRAWING NO.	P-1912	REV. 4



PIN SHINE INDUSTRIAL CO., LTD.

TEL:886-2-22990545

FAX:886-2-22990546

